



# NORTH GLOUCESTERSHIRE ORIENTEERING CLUB

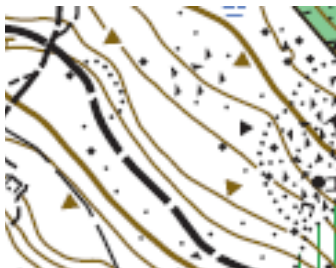
invite you to a **REGIONAL EVENT**

on

**Sunday 10<sup>th</sup> October 2010**

at

**Knockall's Enclosure, Forest of Dean**



Typical, though little used, Forest of Dean mixed woodland, rated in CompassSport as the best area in Gloucestershire.

Field parking adjacent to the A4136 Monmouth-Coleford Road at SO537124. Parking fee of £1/car or £3/minibus will be collected on arrival.

Colour coded courses from White to Black based on British Orienteering medium size Regional event guidelines. Results will be presented by course and age class. This is a ranking event. A free string course will be provided. Dogs permitted in car park only, and must always be on leads

Entries £10 (subject to £2 discount for qualifying BOF members); Juniors £3. Late entry surcharge: Seniors £4; Juniors nil.

SI electronic punching. Dibber hire £2, Juniors nil

Closing dates - Normal: 3<sup>rd</sup> October online or postmarked 28<sup>th</sup> September

Late: 8<sup>th</sup> October, online only, subject to map availability

White, Yellow, Orange, and Light Green courses will be available for entry on the day, subject to map availability, at £6 for seniors and £3 for juniors.

Online entries preferred via [www.fabian4.co.uk](http://www.fabian4.co.uk) or SEF with cheque payable to NGOC, and with SAEs for final details and results, to:

*John Fallows, The Cottage, Comptons Alley, Tewkesbury, Glos, GL20 5QE*

Final details will be published no later than 1 October at [www.ngoc.org.uk](http://www.ngoc.org.uk)

Organiser: Pat Macleod (01594 528128) or [pat\\_macleod@btinternet.com](mailto:pat_macleod@btinternet.com)

Planner: Peter Ward

Controller: Clive Caffall (HOC)

